

Dr. med. Peter Schleicher, physician

Areas of specialisation:

immunology, holistic medicine, oncology

- Director of the "Institute for the treatment of and research into chronic diseases and immunology", Munich
- Head of the immunobiological laboratory "Zytognost", Munich



Dorothea Brückl, physician, yoga teacher

Areas of specialisation:

holistic medicine, neural therapy, fertility issues, immunology

Surgery hours: by appointment

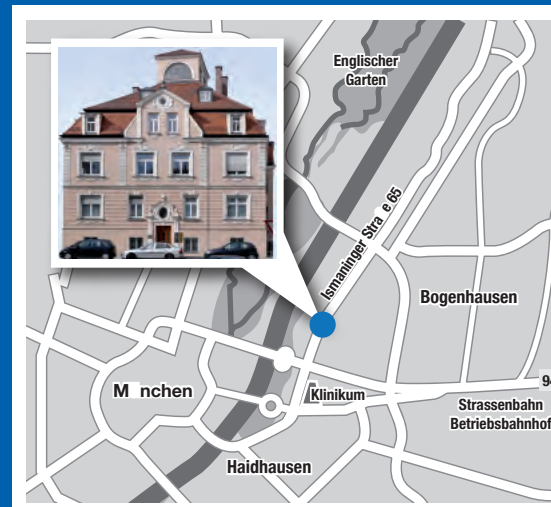
Joint Medical Practice Schleicher & Brückl

Ismaninger Strasse 65

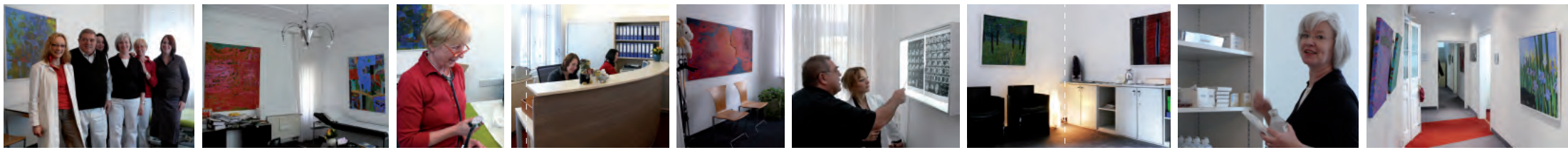
81675 München

Tel.: +49-(0)89-419453-0 email: praxis@praxis-schleicher.de

Fax: +49-(0)89-419453-10 Internet: www.praxis-schleicher.de



Immunology
Oncology
Natural healing
Neural therapy



Main treatment areas

As an immunological medical practice specialising in the treatment of chronic diseases we apply state-of-the-art immunological methods in the fields of diagnostics and therapy.

Our aim is the successful application of holistic therapy concepts under consideration of current scientific standards and under the aspect of a medical treatment without side-effects – thereby sensibly combining conventional medicine and natural healing.

- Oncology
- Allergology (e.g. asthma, neurodermatitis, food intolerances etc.)
- Autoaggressive diseases (myasthenia gravis, scleroderma, Hashimoto's thyroiditis etc.)
- Rare immunological diseases (thrombocytopenia, Fabry disease, Sézary's disease)
- Vulnerability to infections
- Chronic Fatigue Syndrome (CFS)
- Hemochromatosis
- Fertility issues
- Geriatric degenerative diseases
- Chronic pain
- Crohn's disease, ulcerative colitis

In cooperation with specialised medical centres, we offer further therapies including: heat therapy, galvanotherapy, regional perfusion therapy, puncture therapy and sclerotherapy, radioimmunotherapy, trifunctional antibodies, peritoneal perfusion.

Diagnostics

For us, modern immunological diagnostics include a comprehensive psychosocial anamnesis. This approach considers aspects such as distress, loss of identity, integration conflicts, aggression inhibition, dense living conditions, psychosocial conflicts, experienced traumas and surgical intervention etc. in the overall assessment of a patient's health.

Examination methods / Diagnostics / Determination by laboratory data

- Immune status
- Immune function tests (e.g. LTT, NK cell function, modulation tests and many more)
- Hormone status
- Allergy test
- Antibodies
- Circulating immune complexes
- Food intolerances
- Microbiological diagnosis and gut flora
- Sonography / Doppler sonography
- TNF alpha
- Amino acid profile
- Heavy metal test
- Interference field tests

Therapy

Our physicians and the whole medical practice team have many years of experience and expertise in the field of holistic medicine. In our aesthetic premises, we offer our patients stress-free treatments in a relaxed atmosphere and according to each patient's individual wishes and needs.

- Immunomodulation (bacteria-based, viral, plant-based or synthetic)
- Immunological counter-sensitisation
- Immunosubstitution (e.g. vitamin/trace mineral therapy)
- Immunorevitalisation (e.g. VitOrgan)
- Vitamins, trace minerals
- Special immunotherapy (e.g. immunoglobulin infusion)
- Infusion therapy (e.g. deacidification, procaine base infusion and others)
- Ozone therapy
- Neural therapy according to Huneke
- Interference field therapy
- Plasmapheresis
- Erythrocyte apheresis
- Biological fertility enhancement
- Phytotherapy and homoeopathy
- Heavy metal detoxification (e.g. chelation therapy)
- Purgation and detoxification therapy
- Oncological therapies (e.g. tumour vaccines, monoclonal antibodies, immunotherapy and others)